

# Biotic index – macroinvertebrate identification

Common names of macro- invertebrates on a river bed

## Class I - pollution sensitive



**Stonefly Nymph**



**Dobsonfly Larva**



**Alderfly Larva**



**Water Snipe Fly Larva**

Image based on a factsheet from WAV, University of Wisconsin

## Class II - semi-sensitive to pollution



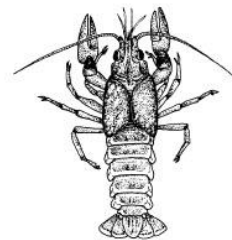
**Caddisfly Larva**



**Caddisfly Larva (cased)**



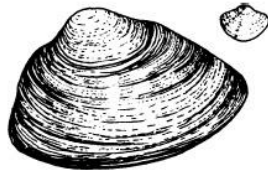
**Dragonfly Nymph**



**Crawfish**



**Cranefly Larva**



**Freshwater Mussels or Fingernail Clams**



**Mayfly Nymph**



**Damselfly Nymph**



**Water Penny**



**Riffle Beetle**

## Class III - Semi-tolerant of pollution



**Blackfly Larva**



**Non-Red Midge Larva**



**Snails: Orb or Gilled (right side opening)**



**Amphipod or Scud**

## Class IV - Tolerant of pollution



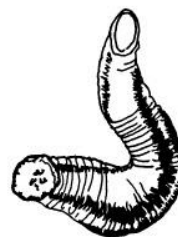
**Pouch Snail (left side opening)**



**Isopod or Aquatic Sowbug**



**Bloodworm Midge Larva (red)**



**Leech**



**Tubifex Worm**