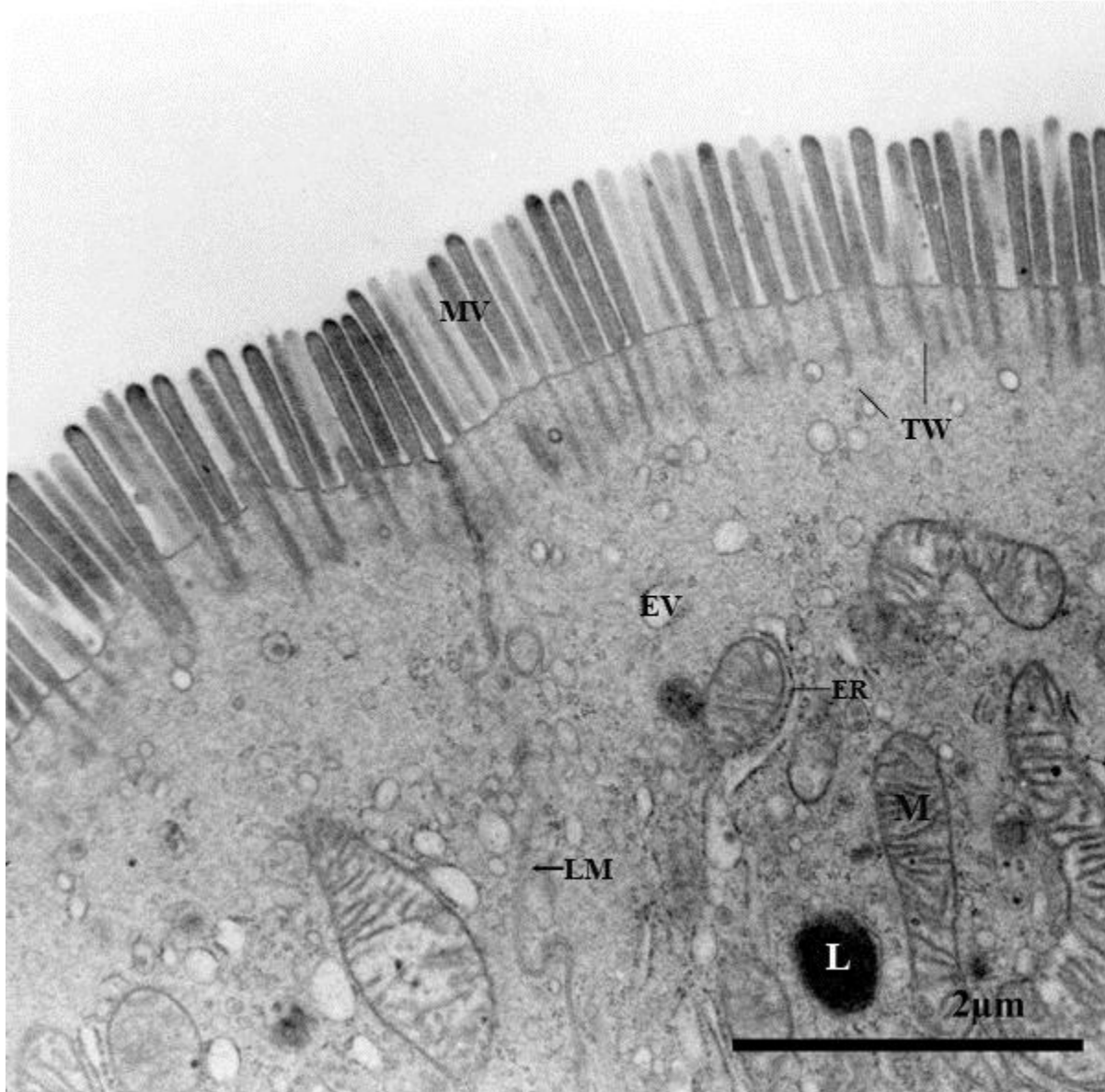
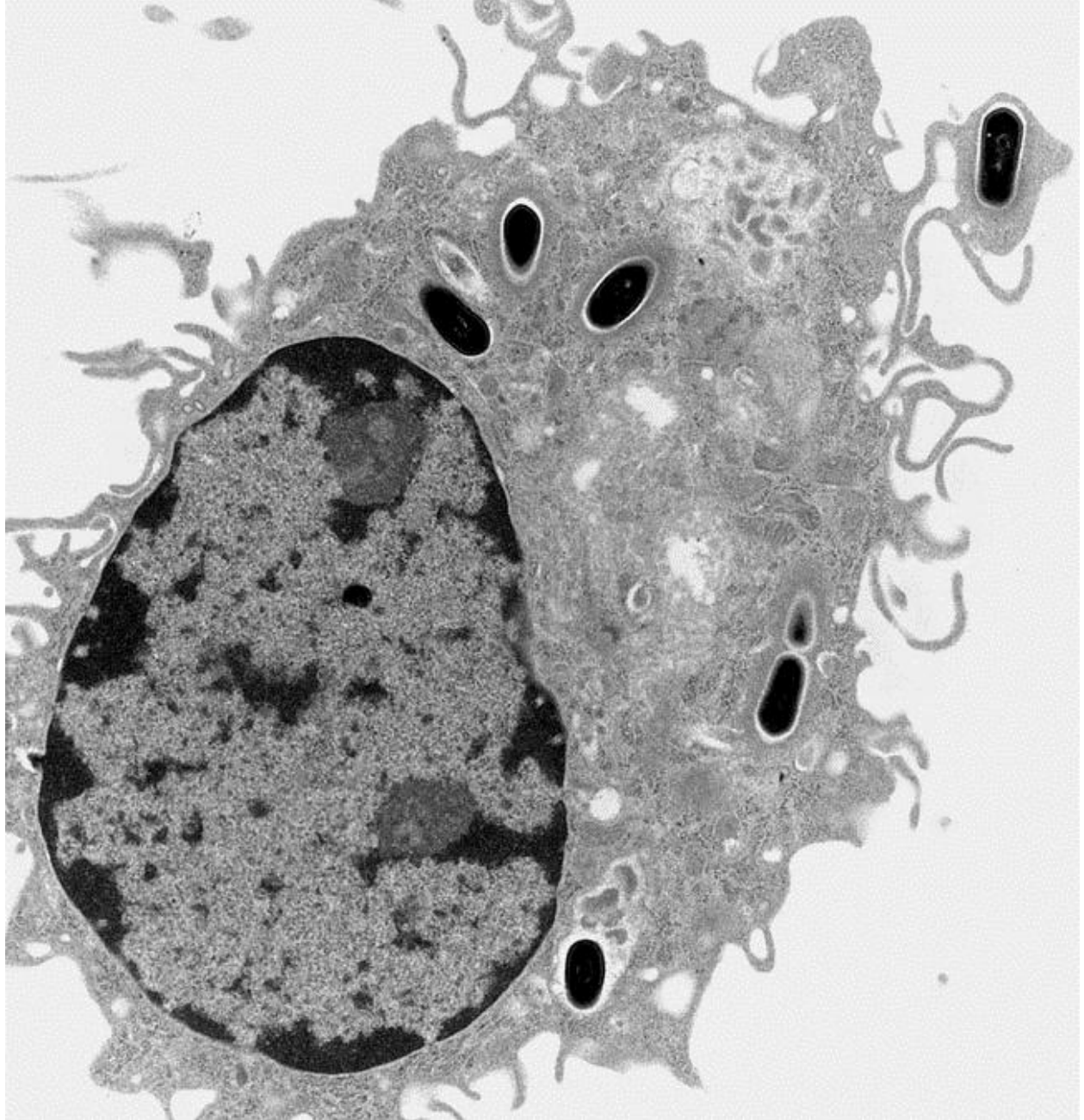


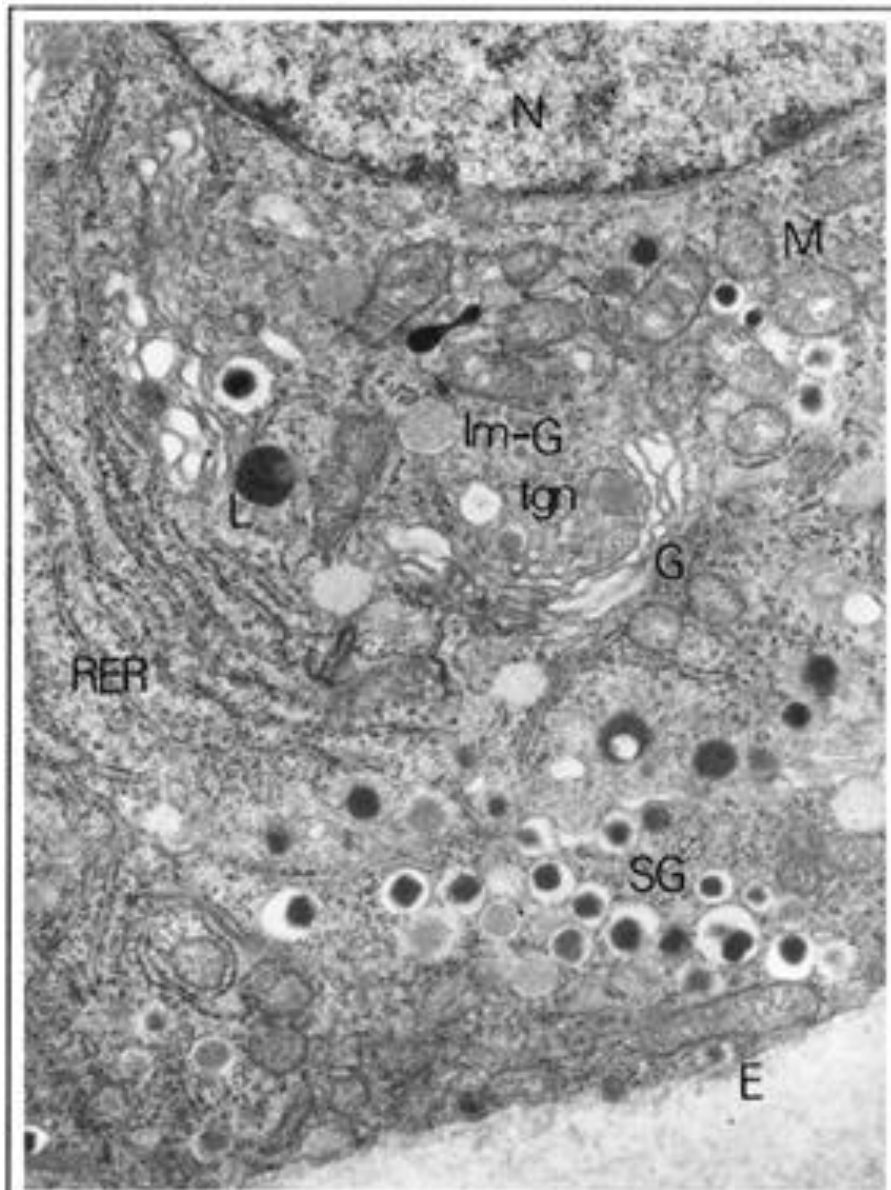
MICROGRAPH PICTURE 1



MICROGRAPH PICTURE 2



MICROGRAPH PICTURE 3



N: Nucleus
RER: Endoplasmic Reticulum
G: Golgi apparatus
tgn: *trans*- Golgi network
L: Lysosome
M: Mitochondria

Im-G: Immature secretory granule
SG: Mature secretory granule
E: Exocytosis

MICROGRAPH PICTURE 4

